

Install Internet Explorer Mode in Microsoft Edge

Deposit 24/7 users can use Microsoft Edge in Internet Explorer mode.

NOTE: Applies to All Windows 10 and Windows 11 Versions.

Add to Trusted Sites

NOTE: Skip to [Enable Reload in Internet Explorer mode](#) if the Deposit 24/7 URL is already a Trusted Site.

1. Update to the latest version of Microsoft Edge.

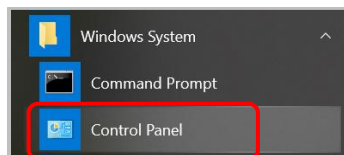
NOTE: Documentation completed using Version 100.0.1185.36 (Official build) (64-bit).

2. Enable Trusted Sites in the Windows Control Panel.

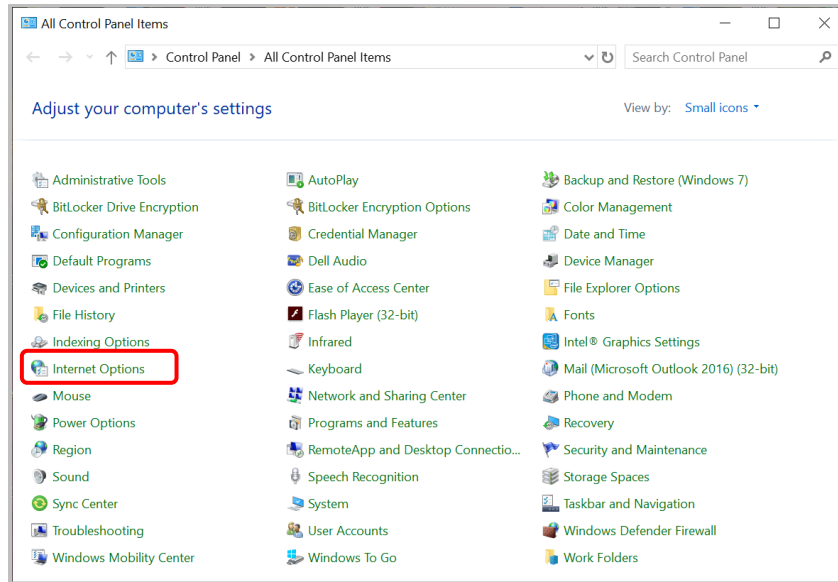
- a. Click Start.



- b. Select Windows System.
- c. Click on the down pointing arrow.
- d. Select Control Panel.



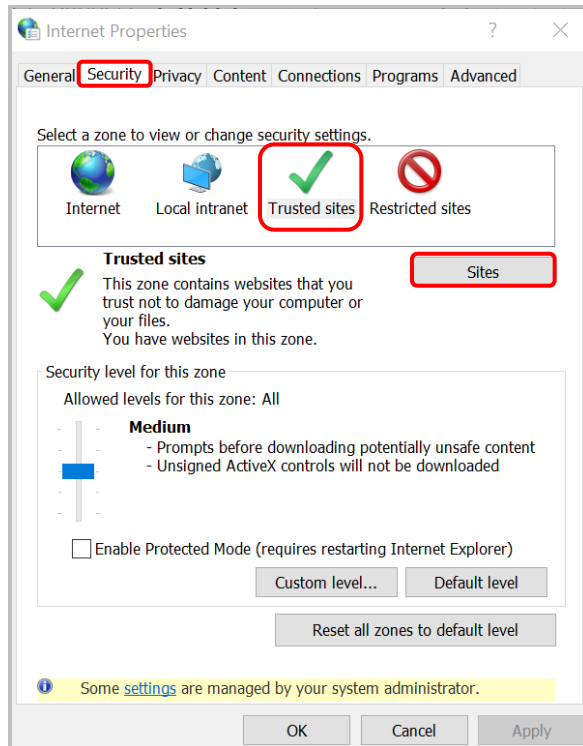
e. Select Internet Options.



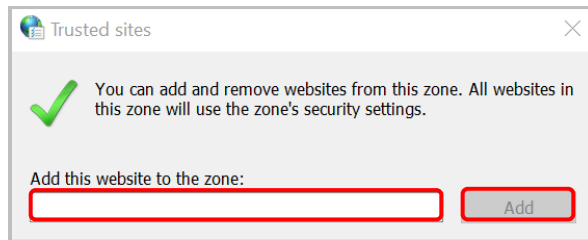
f. Click the Security Tab.

g. Select Trusted sites.

h. Click Sites.



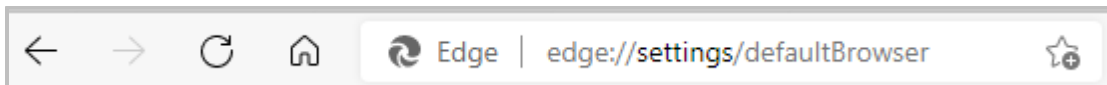
- i. Enter the Deposit 24/7/RDC URL.



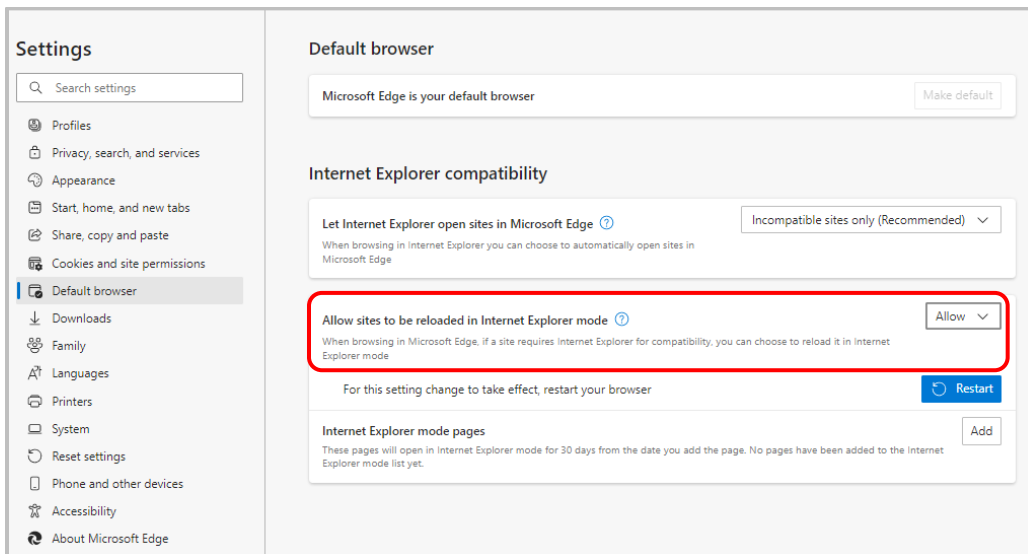
- j. Click Add.

Enable Reload in Internet Explorer mode

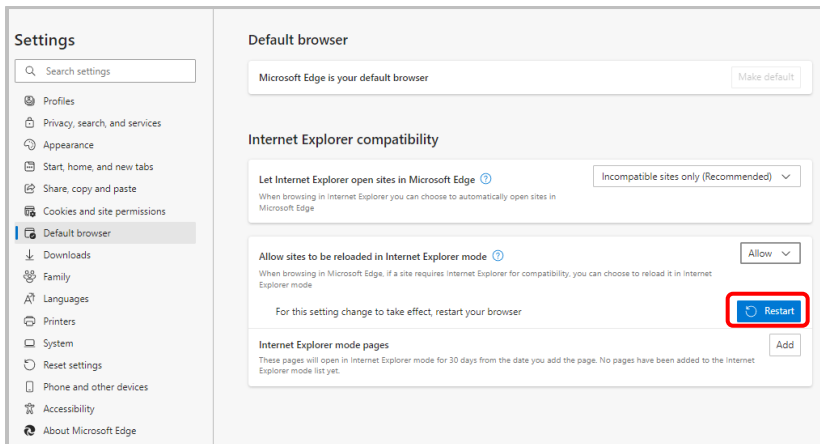
1. Open Edge.
2. Enter `edge://settings/defaultbrowser` to the address bar.



3. Press the Enter key on the keyboard.
4. Select Allow from the dropdown menu to allow sites to be reloaded in Internet Explorer Mode.



5. Restart the Browser.



Reload in Internet Explorer mode

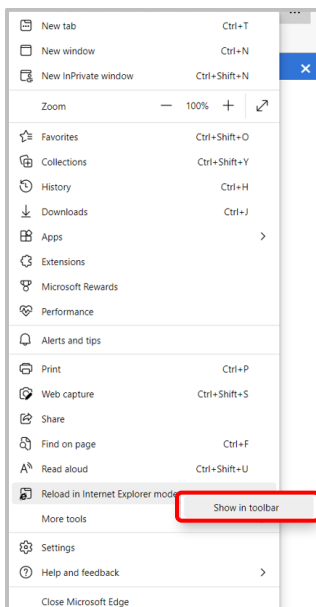
1. Open Edge.
2. Enter the desired Deposit 24/7 URL in the address bar of Edge.

NOTE: Add the Deposit 24/7 URL to Favorites if desired.

3. Go to the Edge settings menu.



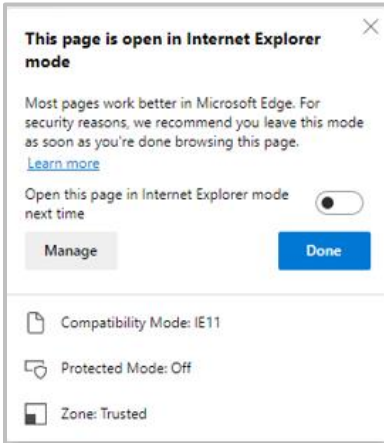
4. Right click on Reload in Internet Explorer mode.
5. Select Show in toolbar.



- An IE mode icon displays in the upper right corner.
- Click the IE mode icon to load the Deposit 24/7 URL in IE mode.



- Click Done.



- Repeat steps 7-8 to load the Deposit 24/7 URL in IE mode before using.